

7 Modes

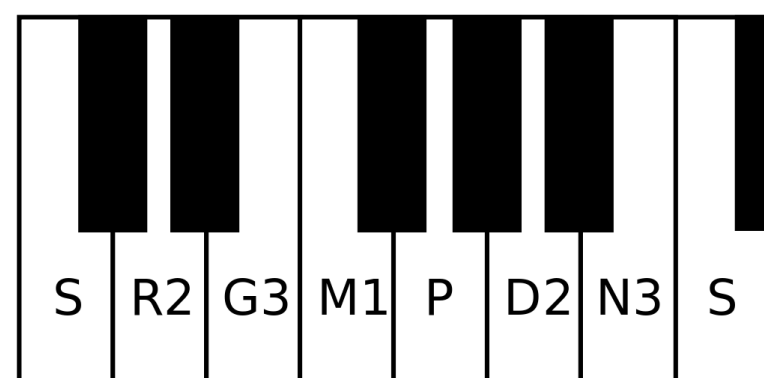
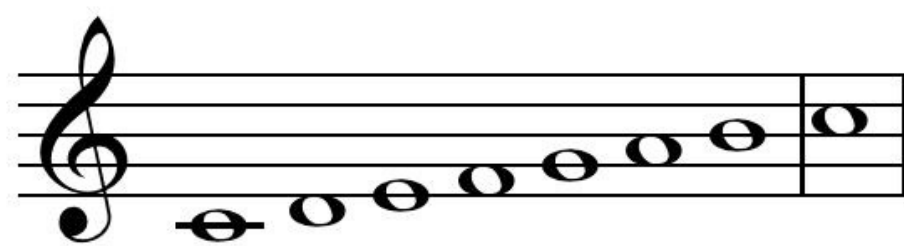
Key "C"

MODES

MODES AND RAGAS

IONIAN

Shankarabharanam

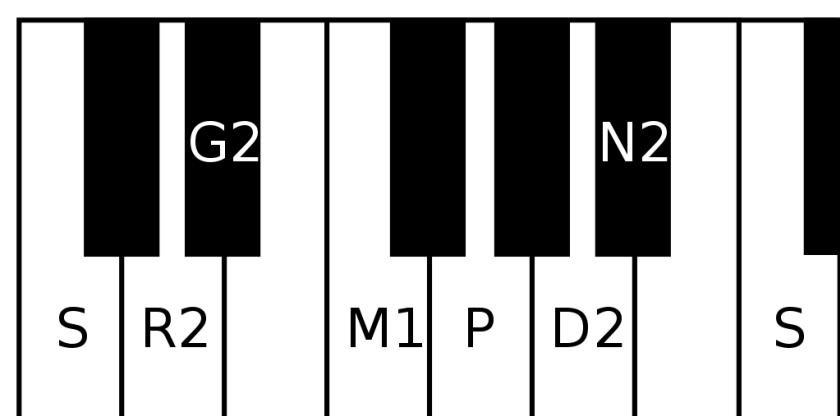
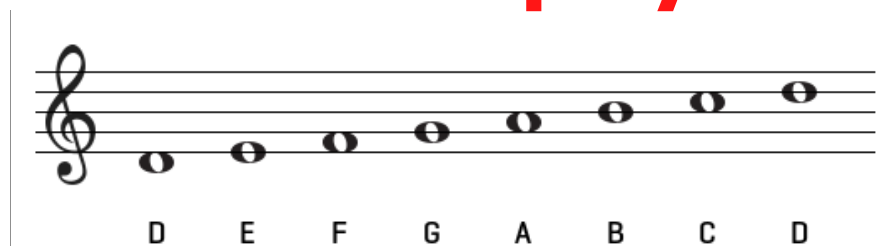


- I it
- D does
- P pounce
- L like
- M monkeys
- A and
- L lions



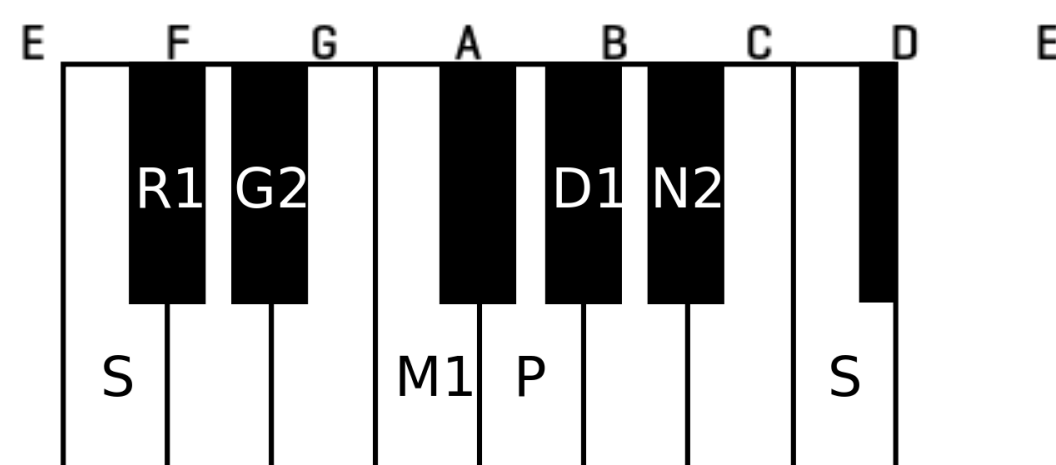
DORIAN

Kharaharapriya



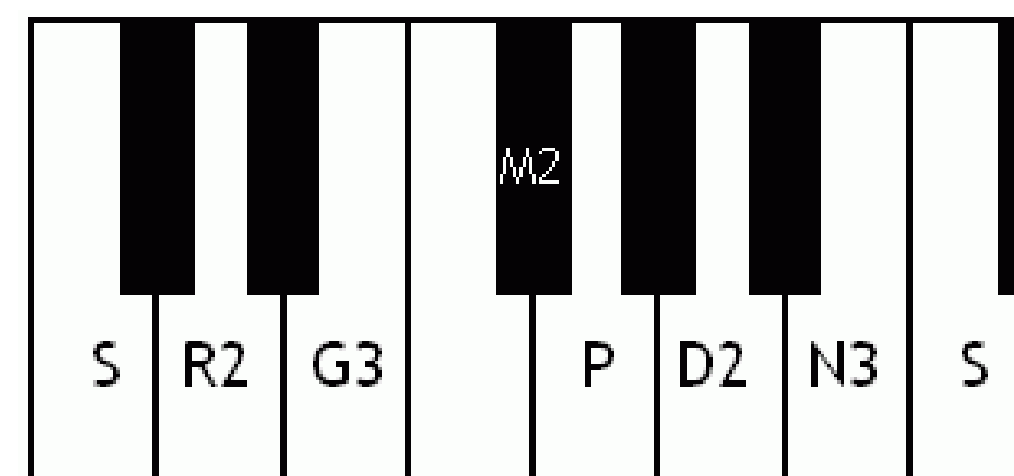
PHRYGIAN

Hanumatodi



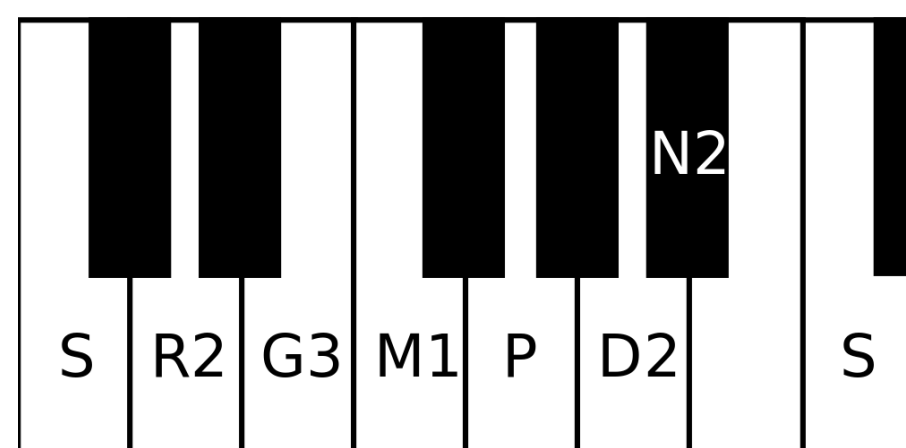
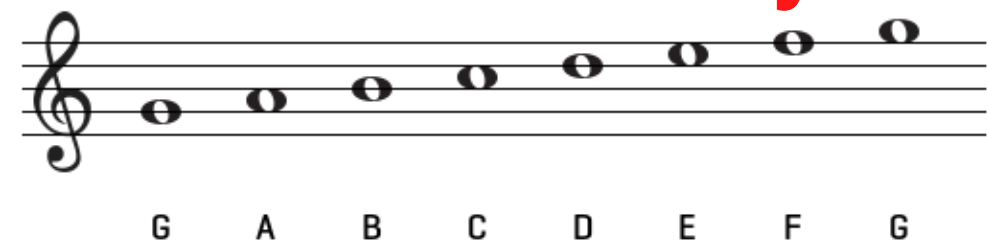
LYDIAN

Kalyani



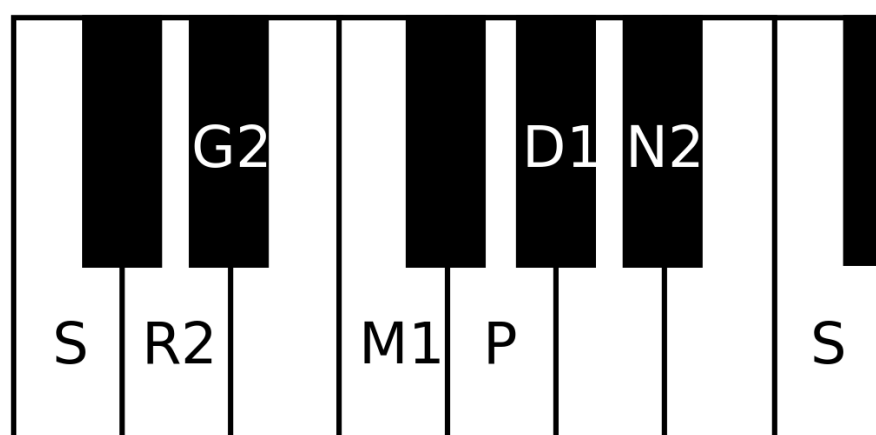
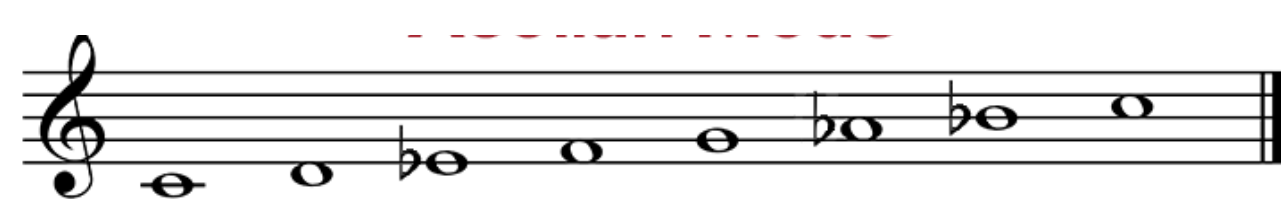
MIXOLYDIAN

HariKambhoji



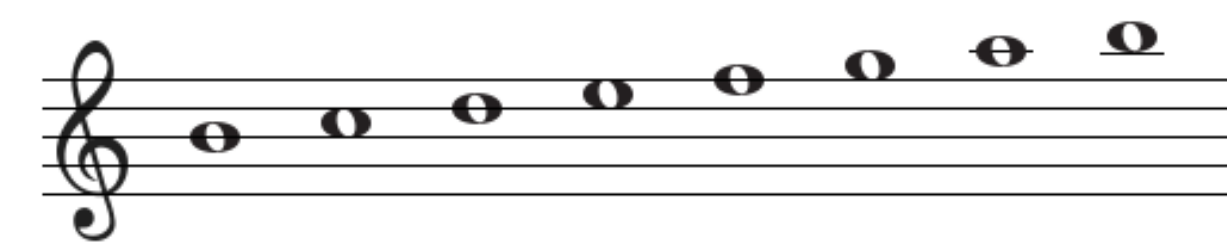
AEOLIAN

Natabhairavi



LOCRIAN

not a melakarta raga (no Pa)



B C D E F G A B